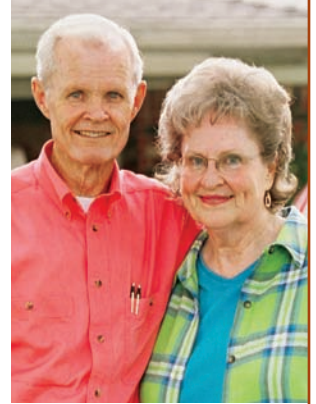




A new development in the heart of Spokane Valley. Close to schools, shopping, and just minutes away from I90.

This development is designed for those who are looking for a great new home at an affordable price. If you're looking for one-level living, "The Riverside" is the plan for you. Our spacious two level plan "The Clearwater," is designed for those who need a little more floor space and separate living areas.



a new development on **progress** avenue

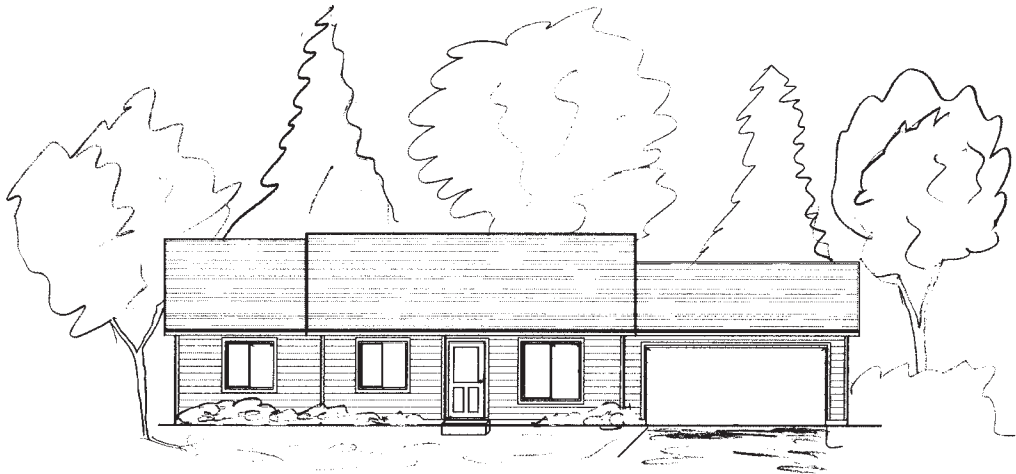


For More Information Please Call Tammy Davenport At 509•999•8795
I90 • South On Sullivan Road • West On Sprague Avenue • North On Progress Road • East On Riverside



the riverside elevations

\$179,900



elevation a



elevation b

- 1158 Square Feet • 3 Bedrooms • 2 Baths • Master Bedroom Suite • Walk-In Master Closet • Center Island In Kitchen •
- Vinyl Siding • Vinyl Windows • 2 Car Garage • Front Yard Hydro Seeding • Front Yard Sprinkler System •

190 • South On Sullivan Road • West On Sprague Avenue • North On Progress Road • East On Riverside



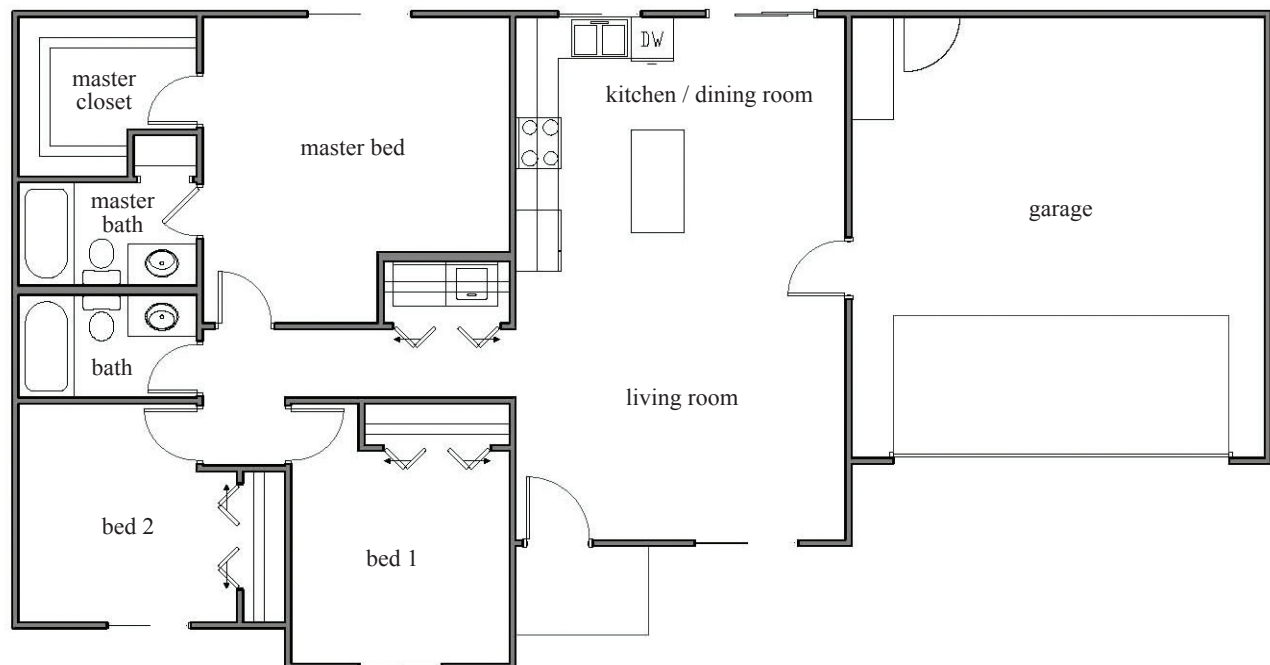
For More Information Please Call Tammy Davenport at

509.999.8795



the riverside floor plan

\$179,900



- 1158 Square Feet • 3 Bedrooms • 2 Baths • Master Bedroom Suite • Walk-In Master Closet • Center Island In Kitchen •
- Vinyl Siding • Vinyl Windows • 2 Car Garage • Front Yard Hydro Seeding • Front Yard Sprinkler System •

190 • South On Sullivan Road • West On Sprague Avenue • North On Progress Road • East On Riverside



For More Information Please Call Tammy Davenport at

509.999.8795



the clearwater elevations

\$189,900



elevation a



elevation b

- 1385 Square Feet • 3 Bedrooms • 2.5 Baths • Large Pantry • Vinyl Siding • Vinyl Windows •
- 2 Car Garage • Front Yard Hydro Seeding • Front Yard Sprinkler System •

190 • South On Sullivan Road • West On Sprague Avenue • North On Progress Road • East On Riverside



For More Information Please Call Tammy Davenport at

509.999.8795



the clearwater floor plan

\$189,900



- 1385 Square Feet • 3 Bedrooms • 2.5 Baths • Large Pantry • Vinyl Siding • Vinyl Windows •
- 2 Car Garage • Front Yard Hydro Seeding • Front Yard Sprinkler System •

190 • South On Sullivan Road • West On Sprague Avenue • North On Progress Road • East On Riverside



For More Information Please Call Tammy Davenport at

509.999.8795

